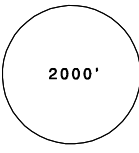
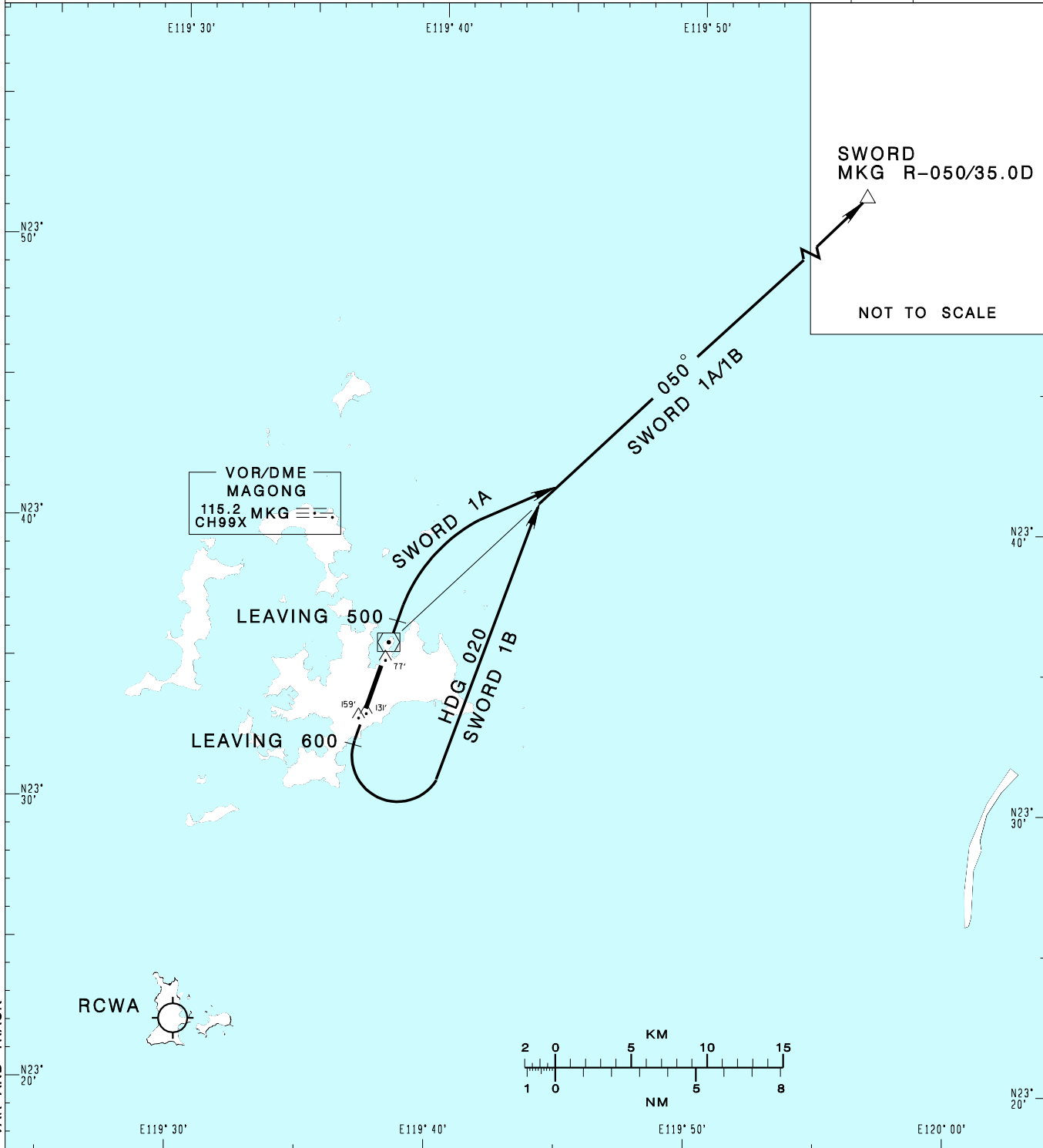


澎湖機場
PENGHU AD

RCQC SID
SWORD 1A(RWY02)
SWORD 1B(RWY20)

KAOHSIUNG APP 128.1 234.8	MAGONG TWR 118.3 236.6	ATIS 127.05	VAR 4°-2022		
Apt Elev: 103'		Trans Level: FL130			Trans Alt: 11,000'
BEARINGS ARE MAGNETIC; DISTANCES ARE NAUTICAL MILES; ELEVATIONS, HEIGHTS IN FEET					



SWORD
MKG R-050/35.0D

NOT TO SCALE

VOR/DME
MAGONG
115.2 MKG CH99X

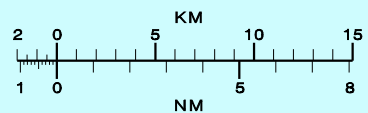
LEAVING 500

LEAVING 600

SWORD 1A

HDG 020
SWORD 1B

050°
SWORD 1A/1B



CHANGES: UPDATE MAG VAR AND TRACK

SWORD ONE ALFA DEPARTURE
Climb on RWY HDG until leaving 500ft, then turn right to track MKG R-050 to SWORD to join A1.

SWORD ONE BRAVO DEPARTURE
Climb on RWY HDG until leaving 600ft, then turn left HDG 020 to track MKG R-050 to SWORD to join A1.

NOTE
1. Caution close-in obstacles (trees, poles & water tower):
159ft MSL, 794m & 131ft MSL, 292m south of THR02;
77ft MSL, 436m north of THR20.
2. SWORD 1B: ATS surveillance required.